

CLINICAL PRACTICE GUIDELINES

Newly diagnosed and relapsed mantle cell lymphoma: ESMO Clinical Practice Guidelines for diagnosis, treatment and follow-up[†]

M. Dreyling¹, E. Campo², O. Hermine³, M. Jerkeman⁴, S. Le Gouill⁵, S. Rule⁶, O. Shpilberg⁷, J. Walewski⁸ & M. Ladetto⁹, on behalf of the ESMO Guidelines Committee*

¹Department of Medicine III, University Hospital – LMU Munich, Munich, Germany; ²Hematopathology Section, Hospital Clinic of Barcelona, University of Barcelona, Barcelona, Spain; ³Department of Hematology, Imagine Institute and Descartes University, INSERM U1163 and CNRS ERL 8564, Necker Hospital, Paris, France; ⁴Department of Hematology, University Lund, Lund, Sweden; ⁵CHU de Nantes, Service d'Hématologie Clinique, Université de Nantes, Nantes, France; ⁶Peninsula School of Medicine and Dentistry, University of Plymouth, Plymouth, UK; ⁷Institute of Hematology, Assuta Medical Center, Tel-Aviv, Israel; ⁸Department of Lymphoid Malignancy, Maria Skłodowska-Curie Institute and Oncology Centre, Warsaw, Poland; ⁹Divisione di Ematologia, Azienda Ospedaliera Santi Antonio e Biagio e Cesare Arrigo, Alessandria, Italy

*Correspondence to: ESMO Guidelines Committee, ESMO Head Office, Via, L. Taddei 4, CH-6962 Viganello-Lugano, Switzerland. E-mail: clinicalguidelines@esmo.org

[†]Approved by the ESMO Guidelines Committee: August 2014, last update May 2017. This publication supersedes the previously published version—*Ann Oncol* 2014; 25 (Suppl. 3): iii83–iii92.

Incidence and epidemiology

Mantle cell lymphoma (MCL) is a relatively uncommon subtype of lymphoid malignancy and represents 5%–7% of malignant lymphoma in Western Europe. The annual incidence of this disease has increased during recent decades to 1–2/100 000 recently. MCL is more common in males than in women with a 3 : 1 ratio.

Diagnosis and pathology/molecular biology

Diagnosis should be based on a surgical specimen, preferably a lymph node biopsy. Core biopsies should only be carried out in patients without easily accessible lymph nodes (e.g. retroperitoneal bulk), keeping in mind the heterogeneity of MCL. In the rare cases with leukaemic manifestation only, a bone marrow (BM) biopsy may be sufficient if additional diagnostic measures are applied, immunophenotype (CD5+, CD19/20+), detection of t(11;14)(q13;q32) and overexpression of cyclin D1. Fine needle aspirations are inappropriate for a reliable evaluation of additional risk factors (cytology, cell proliferation).

The histological report should give the diagnosis according to the World Health Organization (WHO) classification and Ki-67 as the most established histomorphological risk factor [I, A] [1]. Most tumours have a classic morphology of small-medium sized cells with irregular nuclei. However, the malignant lymphocytes may present with a spectrum of morphological variants, including small round (resembling chronic lymphocytic leukaemia),

marginal zone-like, pleomorphic and blastoid cells. In the updated WHO classification, a leukaemic non-nodal subtype has been characterised based on the clinical presentation usually with a more indolent clinical course [1]. As only the minority of these cases is correctly diagnosed based on classical histology only, review by an expert haematopathologist is advised. In particular, additional immunohistochemistry for detection of cyclin D1 overexpression is mandatory.

In the rare cyclin D1-negative cases, detection of SOX11 may help to establish the diagnosis [2].

If possible, additional biopsy material should be stored freshly frozen to allow additional molecular analyses (currently still investigational).

Staging and risk assessment

Since treatment may differ depending on the stage of the disease, initial staging should be thorough, particularly in the rare cases with non-bulky stages I and II (Table 1). Initial work-up should include a computed tomography (CT) scan of the neck, thorax, abdomen and pelvis, and a BM aspirate and biopsy (Table 2). Positron emission tomography (PET)-CT scan is especially recommended in the rare limited stages I/II, before localised radiotherapy (RT) [IV, C]. Gastrointestinal endoscopy is also recommended in these rare cases to detect asymptomatic involvement but otherwise only in symptomatic patients. Of note, when

Table 1. Lugano classification [4]

Stage	Area of involvement
I (I _E)	One lymph node region or extranodal site (I _E)
II (II _E)	Two or more lymph node regions or localised extranodal sites (II _E) on the same side of the diaphragm
III	Lymph node regions or lymphoid structures (e.g. thymus, Waldeyer's ring) on both sides of the diaphragm
IV	Diffuse or disseminated extralymphatic organ involvement

Table 2. Diagnostic work-up

History	B symptoms
Physical examination	Waldeyer's ring, peripheral lymph nodes, liver, spleen
Laboratory work-up	Blood and differential count In leukaemic cases: FACS (CD5/CD19/20+) FISH for <i>t(11;14)</i> recommended LDH, uric acid, liver and renal function Electrophoresis (optional: immune fixation)
Serology	Hepatitis B, C and HIV serology
Imaging	Abdominal ultrasound CT neck, chest, abdomen, pelvis or PET-CT MRI only in selected locations (CNS)
Bone marrow	Histology (cyclin D1 immunohistochemistry) Cytology Recommended: FACS, FISH for <i>t(11;14)</i> Optional: PCR for IGH gene rearrangement
Toxicity	Electrocardiogram, cardiac ultrasound (before anthracyclines, ASCT) Pulmonary function (before ASCT) Creatinine clearance Optional: reproductive counselling in young patients

ASCT, autologous stem cell transplantation; CNS, central nervous system; CT, computed tomography; FACS, fluorescence-activated cell sorting; FISH, fluorescent *in situ* hybridisation; HIV, human immunodeficiency virus; LDH, lactate dehydrogenase; MRI, magnetic resonance imaging; PCR, polymerase chain reaction; PET, positron emission tomography.

analysed, the majority of MCL patients will have gastrointestinal involvement.

Central nervous system (CNS) involvement is rare in asymptomatic patients at diagnosis, but a lumbar puncture may be considered in high-risk cases [at least two of the following risk factors: blastoid variant, elevated lactate dehydrogenase (LDH), impaired performance status or neurological symptoms] [III, C] [3].

A full blood count, blood chemistry including LDH and uric acid, as well as screening tests for human immunodeficiency virus (HIV) and hepatitis B and C, are required. Staging is

Table 3. MIPI and MIPI-c risk stratification [6, 7]

Points	Age (years)	ECOG	LDH (ULN)	WBC (10 ⁹ /L)
0	< 50	0–1	< 0.67	< 6700
1	50–59	–	0.67–0.99	6700–9999
2	60–69	2–4	1.00–1.49	10 000–14 999
3	≥ 70	–	≥ 1.50	≥ 15 000

MIPI risk group (weight in MIPI-c)	Ki-67 index (weight in MIPI-c)	MIPI-c risk group (sum of weights)
Low (0)	< 30% (0)	Low (0)
Low (0)	≥ 30% (1)	Low-intermediate (1)
Intermediate (1)	< 30% (0)	Low-intermediate (1)
Intermediate (1)	≥ 30% (1)	High-intermediate (2)
High (2)	< 30% (0)	High-intermediate (2)
High (2)	≥ 30% (1)	High (3)

For each prognostic factor, 0–3 points were given to each patient and points were summed up to a maximum of 11. Patients with 0–3 points in summary were classified as low-risk, patients with 4 to 5 points as intermediate-risk, and patients with 6–11 points as high-risk. ECOG performance status was weighted with 2 points if patients were unable to work or bedridden (ECOG 2–4). LDH was weighted according to the ratio to the ULN. Thus, for an ULN of 240 U/L, the limits were 180, 240 and 360 U/L for low-, intermediate- and high-risk groups, respectively. ECOG, Eastern Cooperative Oncology Group; LDH, lactate dehydrogenase; MIPI, mantle cell lymphoma international prognostic index; MIPI-c, combined MIPI; ULN, upper limit of normal range; WBC, white blood count.

carried out according to the Lugano classification system (Table 1), with mention of bulky disease > 5 cm when appropriate [4].

The evaluation of the cell proliferation antigen Ki-67 is the most applicable method to evaluate cell proliferation, and is considered the most established biological risk factor in MCL. As the reproducibility of quantitative scores among pathologists may vary, a standardised method has been suggested [5].

For prognostic purposes, a combined MCL International Prognostic Index (MIPI-c) (Table 3; web-based calculator: www.european-mcl.net/de/clinical_mipi.php) has been established [I, A] [6, 7].

Leukaemic non-nodal subtype of MCL

Most patients with MCL follow an aggressive clinical course. However, a subset of patients may exhibit a more indolent evolution. Most of these cases are commonly characterised by a leukaemic non-nodal presentation with BM involvement only and splenomegaly [1, 8]. SOX11 negativity may help to identify these cases. In addition, conventional MCL (SOX11-positive) with low Ki-67 (≤ 10%) tend to have a more indolent course. However, additional *TP53* mutations may cause an aggressive clinical evolution (Figure 1) [9].

Unfortunately, there are no markers that definitely predict indolent behaviour, but a short course of 'watch and wait' period under close observation seems to be appropriate in suspected indolent cases with low tumour burden [III, B] [10].

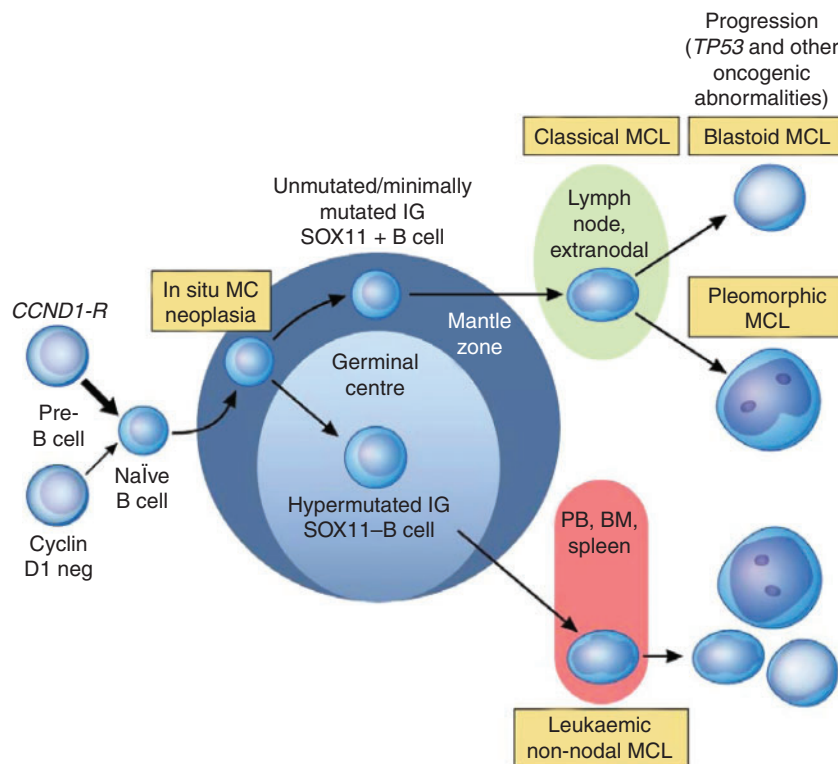


Figure 1. Molecular pathogenesis of MCL.

BM, bone marrow; IG, immunoglobulin; MC, mantle cell; MCL, mantle cell lymphoma; neg, negative; PB, peripheral blood. Republished from [1] with permission. Copyright 2016 American Society of Hematology. All rights reserved.

If treatment is required, recommendations for classical MCL apply.

Treatment

First-line

Stages I–II. In the small proportion of patients with limited non-bulky stages I–II, RT (involved field, 30–36 Gy) has been suggested to achieve long-term remissions [11]. In contrast, in a randomised study, all patients with early-stage MCL relapsed within 1 year [12]. Thus, a shortened conventional chemotherapy (ChT) induction followed by consolidation RT (similar to diffuse large cell lymphoma) may be the most appropriate treatment in these cases [IV, B].

In stage I–II patients with large tumour burden or adverse prognostic features, systemic therapy as indicated for advanced stages should be applied; consolidation RT may be considered depending on tumour location and expected side-effects [IV, B].

Stages III–IV

Induction: In all symptomatic patients and generally in cases with high tumour burden, therapy should be initiated at diagnosis [I, A]. The current therapeutic approach is based on clinical risk factors, symptoms and patient characteristics (Figure 2).

Elderly patients: Based on a median age of 65 years at first diagnosis, the majority of patients do not qualify for dose-intensified

regimens. Three prospective first-line trials, a salvage trial and a systematic meta-analysis support an improved overall response, progression-free survival (PFS) and overall survival (OS) if rituximab was added to ChT (Table 4) [I, A] [13].

Rituximab in combination with ChT such as CHOP (cyclophosphamide, doxorubicin, vincristine and prednisone) or bendamustine should be used [I, B] [14–16]. Recently, a combination with bortezomib achieved almost doubled median PFS but resulted in significant thrombocytopenia [17]. Rituximab in combination with cyclophosphamide, vincristine and prednisone (R-CVP) resulted in inferior response rates and PFS [18]. Purine analogue-based schemes, rituximab with fludarabine and cyclophosphamide (R-FC) or with fludarabine and mitoxantrone (R-FM), are also discouraged due to early failures and long-lasting myelosuppression [I, D] [15]. The addition of high-dose cytarabine (HD-AraC) to CHOP is currently being tested in elderly patients. Recently, rituximab, bendamustine and cytarabine (R-BAC) has been explored also in first-line therapy [19].

In frail patients, a less intense immunochemotherapy, chlorambucil or vincristine, doxorubicin, oral dexamethasone and chlorambucil (VADC) or prednisone, etoposide, procarbazine and cyclophosphamide (PEP-C) may be considered, aiming primarily at palliation [II, B]. However, targeted therapy exhibiting a low toxicity profile might be used in this population [20].

Antibody monotherapy [rituximab, radioimmunotherapy (RIT)] achieves only moderate response rates and is therefore not recommended [III, B] [21].

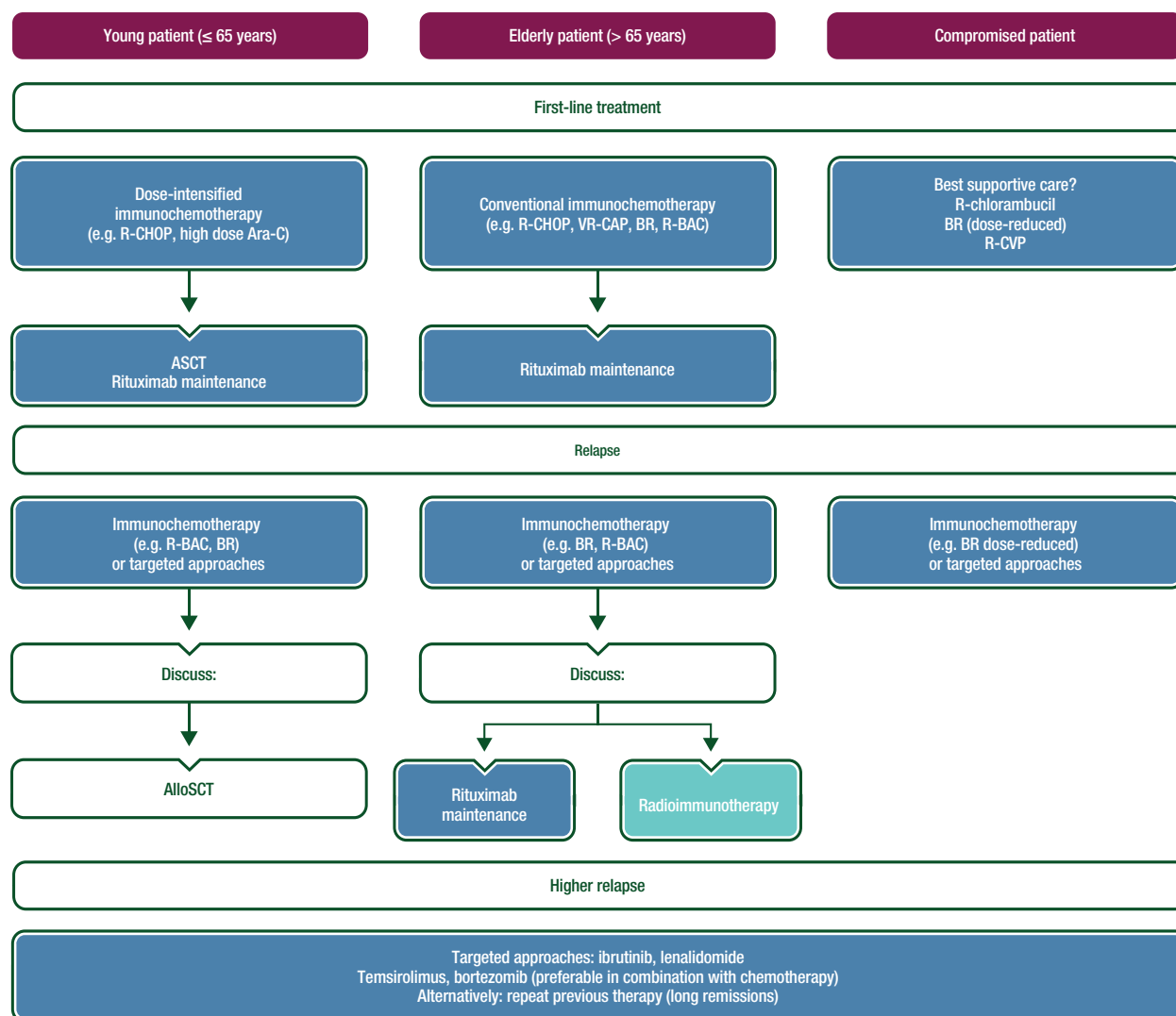


Figure 2. Therapeutic recommendations.

AlloSCT, allogeneic stem cell transplantation; ASCT, autologous stem cell transplantation; BAC, bendamustine and cytarabine; BR, bendamustine and rituximab; Ara-C, cytarabine; CHOP, cyclophosphamide, doxorubicin, vincristine and prednisone; CVP, cyclophosphamide, vincristine and prednisone; R, rituximab; VR-CAP, rituximab, cyclophosphamide, doxorubicin and prednisone with bortezomib.

In patients with positive hepatitis B serology, prophylactic antiviral medication and/or virus load monitoring is strongly recommended [I, A] [22].

Consolidation/maintenance. Rituximab maintenance significantly improves PFS and OS after rituximab and CHOP (R-CHOP) [I, A] and PFS in a systematic meta-analysis [15, 23].

RIT consolidation also prolongs PFS after ChT, but its benefit seems to be inferior in comparison to rituximab maintenance [II, B] [24].

Younger patients: Although no curative treatment is available for MCL so far, an intensive approach, e.g. by autologous stem cell transplantation (ASCT), has been demonstrated to induce higher response and survival rates in fit patients, independently of the addition of rituximab [I, B] (Table 5) [25–27].

In addition, a randomised trial confirmed that a cytarabine-containing induction achieves a significantly improved median time to treatment failure ($P=0.038$) [I, B] [28]. In contrast, an induction-based on HD-AraC alone achieves only insufficient response rates [III, D] [29].

In a retrospective study comparison of the Nordic, HOVON and MCL Younger protocols, total body irradiation (TBI) before ASCT was confirmed to be beneficial only in partial response (PR) patients [II, B] [30]. In contrast, the benefit of RIT has not been demonstrated in inter-study comparisons.

An upfront dose-intensified approach (R-hyper-CVAD, rituximab in combination with hyperfractionated cyclophosphamide, vincristine, doxorubicin and dexamethasone alternating with high-dose methotrexate/cytarabine cycles) also achieved very high response and survival rates in phase II studies, but its feasibility is hampered by a significant therapy-associated

Table 4. Conventional first-line immunochemotherapy in MCL (phase III studies)

Author	Study features	Assessable patients	Therapeutic regimen	ORR% (CR%)	Median PFS (months)	2-Year OS
Lenz et al. [14]	Phase III, randomised	112	CHOP versus R-CHOP	75 (7) versus 94 (34)	21 versus 14 (TTF)	76% versus 76%
Herold et al. [54]	Phase III, randomised	90	MCP versus R-MCP	63 (15) versus 71 (32)	18 versus 20	52% versus 55% (4-year OS)
Kluin-Nelemans et al. [15]	Phase III, randomised	485	R-CHOP versus R-FC R versus IFN α	86 (34) versus 78 (40)	58% versus 29% (4-year DOR)	62% versus 47% (4-year OS) 79% versus 67% (4-year OS)
Rummel et al. [16]	Phase III, randomised	514 (94 MCL)	R-CHOP versus BR	91 (30) versus 93 (40)	21 versus 35	No differences
Robak et al. [17]	Phase III, randomised	487	R-CHOP versus VR-CAP	89 (42) versus 92 (53)	16 versus 31	54% versus 64% (4 years)

BR, bendamustine and rituximab; CHOP, cyclophosphamide, doxorubicin, vincristine and prednisone; CR, complete response; DOR, duration of response; FC, fludarabine and cyclophosphamide; IFN α , interferon alpha; MCL, mantle cell lymphoma; MCP, melphalan, chlorambucil and prednisone; ORR, objective response rate; OS, overall survival; PFS, progression-free survival; R, rituximab; TTF, time to failure; VR-CAP, bortezomib in combination with rituximab, cyclophosphamide, doxorubicin and prednisone.

toxicity [II, C] [31–33] and low success rate of stem cell mobilisation.

Rituximab maintenance following a rituximab with dexamethasone, cytarabine and cisplatin (R-DHAP)-based induction and ASCT improves PFS and OS and represents the current standard of care [I, A] [27].

So far, there are no data to support the application of allogeneic stem cell transplantation (alloSCT) as part of front-line treatment [II, D] [34].

Relapsed disease

A repeated biopsy is recommended to identify important prognostic features of MCL.

Selection of salvage treatment depends on efficacy of prior regimens. In early relapses (< 12–24 months), a non-cross-resistant scheme should be preferred [bendamustine or HD-AraC-containing regimens, e.g. rituximab, bendamustine and cytarabine (R-BAC)] after CHOP or vice versa [19]. Rituximab should be added if the previous antibody-containing scheme achieved > 6 months duration of remission [IV, B].

In cases of early relapses or in refractory cases, newer targeted approaches should be strongly considered (Figure 2; Table 6). Among the registered compounds, ibrutinib achieves the highest response rates and, in some cases, long-term remissions [35–37], but early relapses display very aggressive features. When there are contraindications to ibrutinib therapy, particularly a high risk of bleeding, lenalidomide (preferable in combination with rituximab) may also achieve ongoing remissions in some cases [38–41]. Temsirolimus and bortezomib have been shown to be effective but should preferably be

applied in combination with ChT based on phase II/III studies [17, 42–45].

Rituximab maintenance has a favourable safety profile and prolongs PFS and OS in relapsed disease [I, A] [46]. However, second-line maintenance approaches have not been investigated in patients relapsing after front-line maintenance [IV, D].

RIT consolidation seems to result in extended remission durations [47, 48] especially in elderly patients with comorbidities not eligible for dose intensification [IV, B].

High-dose ChT with ASCT may be considered in patients relapsed after conventional first-line therapy. However, the benefit seems to be marginal in this setting [49], and there is no role for a second autograft at relapse.

In younger patients, alloSCT is potentially curative and has achieved long-term remissions even in patients following early relapse and with refractory disease [III, B]. Based on the advanced age of most patients, dose-reduced conditioning is appropriate [IV, B] [50]. Haploidentical BM transplantation achieves high response rates but is still experimental in MCL.

Response evaluation

PET-CT according to the Lugano classification for response evaluation is optional [4].

Radiological tests should be carried out mid- and post-completion of ChT. Patients who achieve less than a PR should be considered for early salvage regimens. Patients achieving a PR may convert to a complete response after post-induction treatment.

The independent prognostic role of minimal residual disease (MRD) applying patient-specific primers has been confirmed in numerous studies [51, 52]. However, because of the current

Table 5. Dose-intensified first-line therapy in MCL (phase I/III trials)

Study features	Assessable patients	Therapeutic regimen	ORR% (CR%)	Median PFS (years)	Median OS (years)	Dropout rate	TRM	Secondary tumour rate
ASCT-based regimens								
Dreyling et al. [25, 26]	122	CHOP + TBI + ASCT versus CHOP + TBI + IFN α	98 (81) versus 99 (37)	3.3 versus 1.4	NR (83% 3-year OS) versus NR (77% 3-year OS)	13% versus N/A	5% versus 0%	5%
Hermine et al. [28]	455	R-CHOP + TBI + ASCT versus R-CHOP/R-DHAP + HD-AraC + ASCT	98 (63) versus 99 (61)	3.8 versus 7.3	6.8 versus NR	N/A	4%	N/A
Eskelund et al. [55]	160	R-Maxi-CHOP + HD-AraC + ASCT	96 (54)	7.4	NR (64% 10-year OS)	9%	5%	4%
Delarue et al. [56]	60	R-CHOP/R-DHAP + HD-AraC + ASCT	100 (96)	6.9	NR (75% 5-year OS)	18%	1.5%	18%
Le Gouill et al. [27]	299	R-DHAP + ASCT versus R-DHAP + ASCT + R maintenance	83 (77)	NR (73% 3-year PFS) versus NR (89% 3-year PFS)	NR (84% 3-year OS) versus NR (93% 3-year OS)	N/A	N/A	N/A
Non-ASCT-based regimens								
Romaguera et al. [31]	97	R-hyper-CVAD	N/A	4.6	NR (64% 10-year OS)	29%	8%	5%
Merli et al. [32]	60	R-hyper-CVAD	83 (72)	NR (73% 5-year PFS)	NR (61% 5-year OS)	63%	6.5%	1.5%
Bernstein et al. [33]	49	R-hyper-CVAD	86 (55)	4.8	6.8	39%	2%	4%

ASCT, autologous stem cell transplantation; CHOP, cyclophosphamide, doxorubicin, vincristine, prednisone; DHAP, dexamethasone, cytarabine and cisplatin; CR, complete response; HD-AraC, high dose cytarabine; hyper-CVAD, hyperfractionated cyclophosphamide, vincristine, doxorubicin, dexamethasone alternating with high-dose methotrexate and cytarabine; IFN α , interferon alpha; Maxi-CHOP, maximum-strength CHOP; MCL, mantle cell lymphoma; N/A, not applicable; NR, not reached; ORR, objective response rate; OS, overall survival; PFS, progression-free survival; R, rituximab; TBI, total body irradiation; TRM, transplant-related mortality.

Table 6. Published clinical studies investigating molecular targeted approaches in relapsed MCL

Author	Study features	Assessable patients	Therapeutic regimen	ORR% (CR%)	Median PFS (months)	Median OS (months)
Proteasome inhibitors						
Goy et al. [45]	Phase II	141	Bortezomib	33 (8)	6.7 (TTP)	23.5
mTOR inhibitors						
Hess et al. [42]	Phase III, randomised	54	Temsirolimus 175 mg/75 mg	22 (2)	4.8	12.8
		54	Temsirolimus 175 mg/25 mg	6 (0)	3.4	10.0
		53	Investigator's choice	2 (2)	1.9	9.7
Ansell et al. [43]	Phase II	69	Temsirolimus, rituximab	59 (19)	9.7	29.5
Hess et al. [44]	Phase II	32	Temsirolimus, BR	87 (8)	18	36.0
Immunomodulatory drugs						
Zinzani et al. [38]	Phase II	57	Lenalidomide	35 (12)	8.8	NR
Goy et al. [39]	Phase II	134	Lenalidomide	28 (8)	4	19.0
Trneny et al. [40]	Phase III	254	Lenalidomide	46 (11)	8.7	27.9
			Investigator's choice	23 (8)	5.2	21.2
Wang et al. [41]	Phase II	44	Lenalidomide, rituximab	57 (36)	11.1	24.3
Antibody-based approaches						
Wang et al. [47]	Phase II	32	⁹⁰ Y-ibritumumab tiuxetan	31 (16)	6 (EFS)	21
Ferrero et al. [48]	Phase II	15+ ^a	⁹⁰ Y-ibritumumab tiuxetan	40 (20)	3.7	13.8
BCR signalling inhibitors						
Wang et al. [35]	Phase II	111	Ibrutinib	68 (21)	13.9	NR (1.5-year OS 58%)
Dreyling et al. [36]	Phase III	280	Ibrutinib versus temsirolimus	72 (26)	14.6	NR (68% at 1 year)
Wang et al. [37]	Phase II	50	Ibrutinib, rituximab	88 (44)	NR	NR
Kahl et al. [57]	Phase I	16	Idelalisib	62 (N/A)	3 (DOR)	N/A
BCL2 inhibitors						
Davids et al. [53]	Phase I	32 (8 MCL)	Venetoclax ^b	100 (0)	N/A	N/A

^aFifteen patients received the antibody as relapse monotherapy, 30 patients as consolidation after salvage treatment.

^bNot registered in MCL.

BCL2, B-cell lymphoma 2; BCR, B-cell receptor; BR, bendamustine and rituximab; CR, complete response; DOR, duration of response; EFS, event-free survival; MCL, mantle cell lymphoma; mTOR, mechanistic target of rapamycin; N/A, not applicable; NR, not reached; ORR, overall response rate; OS, overall survival; PFS, progression-free survival; TTP, time to progression.

Table 7. Recommended follow-up

Examination	Details	Year 1–2	Year 3–5	Year > 5
History	B symptoms	Every 3 months	Twice annually	Annually
Physical examination	Peripheral lymph nodes, liver, spleen	Every 3 months	Twice annually	Annually
Laboratory work-up	Blood and differential count	Every 3 months	Twice annually	Annually
	LDH			
Imaging	Abdominal ultrasound	Optional: every 3–6 months	Optional: every 6–12 months	If progress suspected
	CT neck, chest, abdomen, pelvis			
Toxicity	TSH if irradiated	Annually		

CT, computed tomography; LDH, lactate dehydrogenase; TSH, thyroid-stimulating hormone.

limitations in knowing how to react, especially in MRD-positive patients, its use is advised in clinical trials but not recommended in clinical routine, except for the setting of donor lymphocyte infusion post-allograft.

Personalised medicine

In this disease setting, more research is needed to identify molecular markers, which could translate into a more personalised approach.

Table 8. Summary of recommendations

Diagnostic procedures include histomorphology by an expert haematopathologist, immunophenotype (CD5+, CD19/20+), Ki-67 staining and mandatory detection of cyclin D1 overexpression or t(11;14)(q13;q32)

Clinical and biological prognosticators (MIPI-c) should be applied in clinical routine to estimate the clinical behaviour

In localised stages: discuss conventional ChT followed by RT (30–36 Gy)

In advanced stages:

- Younger patients: HD-AraC containing regimens plus rituximab followed by ASCT and rituximab maintenance
- Elderly patients: conventional immunochemotherapy (e.g. R-CHOP, VR-CAP, BR, R-BAC) followed by rituximab maintenance.

In relapse:

- Targeted approaches (ibrutinib, lenalidomide) should be considered, temsirolimus and bortezomib should be preferably combined with ChT
- In younger patients, an alloSCT should be discussed
- Consider participation in trials

alloSCT, allogeneic stem cell transplantation; ASCT, autologous stem cell transplantation; BR, bendamustine and rituximab; ChT, chemotherapy; HD-AraC, high dose cytarabine; MIPI-c, combined mantle cell lymphoma international prognostic index; R-BAC, rituximab, bendamustine and cytarabine; R-CHOP, rituximab plus cyclophosphamide, doxorubicin, vincristine and prednisone; VR-CAP, rituximab, cyclophosphamide, doxorubicin, and prednisone with bortezomib; RT, radiotherapy.

Table 9. Levels of evidence and grades of recommendation (adapted from the Infectious Diseases Society of America–United States Public Health Service Grading System^a)**Levels of evidence**

- | | |
|-----|--|
| I | Evidence from at least one large randomised, controlled trial of good methodological quality (low potential for bias) or meta-analyses of well-conducted randomised trials without heterogeneity |
| II | Small randomised trials or large randomised trials with a suspicion of bias (lower methodological quality) or meta-analyses of such trials or of trials with demonstrated heterogeneity |
| III | Prospective cohort studies |
| IV | Retrospective cohort studies or case–control studies |
| V | Studies without control group, case reports, experts opinions |

Grades of recommendation

- | | |
|---|--|
| A | Strong evidence for efficacy with a substantial clinical benefit, strongly recommended |
| B | Strong or moderate evidence for efficacy but with a limited clinical benefit, generally recommended |
| C | Insufficient evidence for efficacy or benefit does not outweigh the risk or the disadvantages (adverse events, costs, . . .), optional |
| D | Moderate evidence against efficacy or for adverse outcome, generally not recommended |
| E | Strong evidence against efficacy or for adverse outcome, never recommended |

^aBy permission of the Infectious Diseases Society of America (58).

The selection of the optimal treatment of any given patient is based mainly on clinical and biological risk factors, symptoms and tumour load (Figure 2). PET and MRD-based tailored treatments are currently being evaluated in studies but are not yet part of routine clinical practice.

New agents, especially other inhibitors targeting the B-cell receptor (BCR) pathway, B-cell lymphoma 2 (BCL2) or cyclin-dependent kinases (CDK), are currently being investigated [53].

Follow-up, long-term implications and survivorship

The following recommendations are based on consensus rather than on evidence (see Table 7):

- History and physical examination, blood counts and routine chemistry every 3 months for 2 years, every 6 months for 3 additional years and, subsequently, once a year [V, D].
- Annual evaluation of thyroid function in patients after irradiation of the neck.
- Optional CT scan (or ultrasound examinations to reduce radiation exposure) every 3–6 months for 2 years and every 6–12 months up to 5 years. However, there is no strong evidence to support a regular radiological follow-up. These recommendations are driven by the concern to minimise radiation exposure and lack of evidence for survival advantage conferred with routine surveillance imaging. PET-CT should not be used for surveillance.
- Some studies suggest that pre-emptive treatment may be efficient. However, MRD screening may be carried out but should not guide therapeutic strategies outside clinical studies.

Methodology

These Clinical Practice Guidelines were developed in accordance with the ESMO standard operating procedures for Clinical Practice Guidelines development <http://www.esmo.org/Guidelines/ESMO-Guidelines-Methodology>. The relevant literature has been selected by the expert authors. A summary of recommended treatment strategies outside of clinical studies is provided in Figure 2, and a summary of recommendations is provided in Table 8. Levels of evidence and grades of recommendation have been applied using the system shown in Table 9. Statements without grading were considered justified standard clinical practice by the experts and the ESMO Faculty. This manuscript has been subjected to an anonymous peer review process.

Disclosure

MD has reported being a member of the advisory board of Bayer, Celgene, Gilead, Janssen, Mundipharma, Sandoz and Roche, received honoraria from Bayer, Celgene, Gilead, Janssen and Roche and research grants from Celgene, Janssen, Mundipharma, Pfizer and Roche; MJ received research support from Janssen,

Celgene, Gilead and Abbvie; SLG has reported research grants and honoraria from Roche Genentech and Janssen-Cilag and honoraria from Celgene; OS has reported to be a member of the scientific advisory board for Roche, AbbVie, Gilead sciences and Takeda; JW has reported advisory board for Roche, Janssen-Cilag, Celgene, Amgen, Bristol-Myers Squibb and Incyte, received lecture honoraria from Roche, Takeda, Celgene, Servier, Gilead and Janssen-Cilag, research funding from Roche, Mundipharma, Celgene and GlaxoSmithKline/Novartis, and travel grants from Roche, Celgene, Sanofi and Servier; EC, OH, SR and ML have reported no conflict of interest.

References

- Swerdlow SH, Campo E, Pileri SA et al. The 2016 revision of the World Health Organization classification of lymphoid neoplasms. *Blood* 2016; 127: 2375–2390.
- Mozos A, Royo C, Hartmann E et al. SOX11 expression is highly specific for mantle cell lymphoma and identifies the cyclin D1-negative subtype. *Haematologica* 2009; 94: 1555–1562.
- Cheah CY, George A, Giné E et al. European Mantle Cell Lymphoma Network. Central nervous system involvement in mantle cell lymphoma: clinical features, prognostic factors and outcomes from the European Mantle Cell Lymphoma Network. *Ann Oncol* 2013; 24: 2119–2123.
- Cheson BD, Fisher RI, Barrington SF et al. Recommendations for initial evaluation, staging and response assessment of Hodgkin and non-Hodgkin lymphoma – the Lugano Classification. *J Clin Oncol* 2014; 32: 3059–3068.
- Klapper W, Hoster E, Determann O et al. Ki-67 as a prognostic marker in mantle cell lymphoma-consensus guidelines of the pathology panel of the European MCL Network. *J Hematop* 2009; 2: 103–111.
- Hoster E, Dreyling M, Klapper W et al. A new prognostic index (MIPI) for patients with advanced-stage mantle cell lymphoma. *Blood* 2008; 111: 558–565.
- Hoster E, Rosenwald A, Berger F et al. Prognostic value of Ki-67 index, cytology, and growth pattern in mantle-cell lymphoma: results from randomized trials of the European Mantle Cell Lymphoma Network. *J Clin Oncol* 2016; 34: 1386–1394.
- Fernández V, Salamero O, Espinet B et al. Genomic and gene expression profiling defines indolent forms of mantle cell lymphoma. *Cancer Res* 2010; 70: 1408–1418.
- Nygren L, Baumgartner Wennerholm S, Klimkowska M et al. Prognostic role of SOX11 in a population-based cohort of mantle cell lymphoma. *Blood* 2012; 119: 4215–4223.
- Martin P, Chadburn A, Christos P et al. Outcome of deferred initial therapy in mantle-cell lymphoma. *J Clin Oncol* 2009; 27: 1209–1213.
- Leitch HA, Gascoyne RD, Chhanabhai M et al. Limited-stage mantle-cell lymphoma. *Ann Oncol* 2003; 14: 1555–1561.
- Engelhard M, Unterhalt M, Hansmann M et al. Follicular lymphoma, immunocytoma, and mantle cell lymphoma: randomized evaluation of curative radiotherapy in limited stage nodal disease. *Ann Oncol* 2008; 19 (suppl. 4): 418.
- Schulz H, Bohlius JF, Trelle S et al. Immunochemotherapy with rituximab and overall survival in patients with indolent or mantle cell lymphoma: a systematic review and meta-analysis. *J Natl Cancer Inst* 2007; 99: 706–714.
- Lenz G, Dreyling M, Hoster E et al. Immunochemotherapy with rituximab and cyclophosphamide, doxorubicin, vincristine, and prednisone significantly improves response and time to treatment failure, but not long-term outcome in patients with previously untreated mantle cell lymphoma: results of a prospective randomized trial of the German Low Grade Lymphoma Study Group (GLSG). *J Clin Oncol* 2005; 23: 1984–1992.
- Kluin-Nelemans HC, Hoster E, Hermine O et al. Treatment of older patients with mantle-cell lymphoma. *N Engl J Med* 2012; 367: 520–531.
- Rummel MJ, Niederle N, Maschmeyer G et al. Bendamustine plus rituximab versus CHOP plus rituximab as first-line treatment for patients with indolent and mantle-cell lymphomas: an open-label, multicentre, randomised, phase 3 non-inferiority trial. *Lancet* 2013; 381: 1203–1210.
- Robak T, Huang H, Jin J et al. Bortezomib-based therapy for newly diagnosed mantle-cell lymphoma. *N Engl J Med* 2015; 372: 944–953.
- Flinn IW, van der Jagt R, Kahl BS et al. Randomized trial of bendamustine-rituximab or R-CHOP/R-CVP in first-line treatment of indolent NHL or MCL: the BRIGHT study. *Blood* 2014; 123: 2944–2952.
- Visco C, Chiappella A, Nassi L et al. Rituximab, bendamustine, and low-dose cytarabine as induction therapy in elderly patients with mantle cell lymphoma: a multicentre, phase 2 trial from Fondazione Italiana Linfomi. *Lancet Haematol* 2017; 4: e15–e23.
- Ruan J, Martin P, Shah B et al. Lenalidomide plus rituximab as initial treatment for mantle-cell lymphoma. *N Engl J Med* 2015; 373: 1835–1844.
- Ghielmini M, Schmitz SF, Cogliatti S et al. Effect of single-agent rituximab given at the standard schedule or as prolonged treatment in patients with mantle cell lymphoma: a study of the Swiss Group for Clinical Cancer Research (SAKK). *J Clin Oncol* 2005; 23: 705–711.
- Mallet V, van Bömmel F, Doerig C et al. Management of viral hepatitis in patients with haematological malignancy and in patients undergoing haemopoietic stem cell transplantation: recommendations of the 5th European Conference on Infections in Leukaemia (ECIL-5). *Lancet Infect Dis* 2016; 16: 606–617.
- Vidal L, Gafter-Gvili A, Dreyling MH et al. Maintenance therapy for patients with mantle cell lymphoma (MCL) – a systematic review and meta-analysis of randomized controlled trials (RCTs). *Blood* 2016; (ASH Annual Meeting Abstracts); 128: 1802.
- Smith MR, Li H, Gordon L et al. Phase II study of rituximab plus cyclophosphamide, doxorubicin, vincristine, and prednisone immunochemotherapy followed by yttrium-90-ibritumomab tiuxetan in untreated mantle-cell lymphoma: Eastern Cooperative Oncology Group Study E1499. *J Clin Oncol* 2012; 30: 3119–3126.
- Dreyling M, Lenz G, Hoster E et al. Early consolidation by myeloablative radiochemotherapy followed by autologous stem cell transplantation in first remission significantly prolongs progression-free survival in mantle-cell lymphoma: results of a prospective randomized trial of the European MCL Network. *Blood* 2005; 105: 2677–2684.
- Hoster E, Metzner B, Forstpointner R et al. Autologous Stem Cell Transplantation and Addition of Rituximab Independently Prolong Response Duration in Advanced Stage Mantle Cell Lymphoma. *Blood* 2009; (ASH Annual Meeting Abstracts); 114: 880.
- Le Gouill S, Thieblemont C, Oberic L et al. Rituximab maintenance after autologous stem cell transplantation prolongs survival in younger patients with mantle cell lymphoma. *Blood* 2016; (ASH Annual Meeting Abstracts); 128: 145.
- Hermine O, Hoster E, Walewski J et al. Addition of high-dose cytarabine to immunochemotherapy before autologous stem-cell transplantation in patients aged 65 years or younger with mantle cell lymphoma (MCL Younger): a randomised, open-label, phase 3 trial of the European Mantle Cell Lymphoma Network. *Lancet* 2016; 388: 565–575.
- Laurell A, Kolstad A, Jerkeman M et al. High dose cytarabine with rituximab is not enough in first-line treatment of mantle cell lymphoma with high proliferation: early closure of the Nordic Lymphoma Group Mantle Cell Lymphoma 5 trial. *Leuk Lymphoma* 2014; 55: 1206–1208.
- Hoster E, Geisler CH, Doorduijn J et al. Total body irradiation after high-dose cytarabine in mantle cell lymphoma: A comparison of Nordic MCL2, HOVON-45, and European MCL Younger trials. *Leukemia* 2016; 30: 1428–1430.
- Romaguera JE, Fayad L, Rodriguez MA et al. High rate of durable remissions after treatment of newly diagnosed aggressive mantle-cell lymphoma with rituximab plus hyper-CVAD alternating with rituximab plus high-dose methotrexate and cytarabine. *J Clin Oncol* 2005; 23: 7013–7023.
- Merli F, Luminari S, Ilariucci F et al. Rituximab plus HyperCVAD alternating with high dose cytarabine and methotrexate for the initial

- treatment of patients with mantle cell lymphoma, a multicentre trial from Gruppo Italiano Studio Linfomi. *Br J Haematol* 2012; 156: 346–353.
33. Bernstein SH, Epner E, Unger JM et al. A phase II multicenter trial of hyperCVAD MTX/Ara-C and rituximab in patients with previously untreated mantle cell lymphoma; SWOG 0213. *Ann Oncol* 2013; 24: 1587–1593.
 34. Krüger WH, Hirt C, Basara N et al. Allogeneic stem cell transplantation for mantle cell lymphoma-final report from the prospective trials of the East German Study Group Haematology/Oncology (OSHO). *Ann Hematol* 2014; 93: 1587–1597.
 35. Wang ML, Rule S, Martin P et al. Targeting BTK with ibrutinib in relapsed or refractory mantle-cell lymphoma. *N Engl J Med* 2013; 369: 507–516.
 36. Dreyling M, Jurczak W, Jerkeman M et al. Ibrutinib versus temsirolimus in patients with relapsed or refractory mantle-cell lymphoma: an international, randomised, open-label, phase 3 study. *Lancet* 2016; 387: 770–778.
 37. Wang ML, Lee H, Chuang H et al. Ibrutinib in combination with rituximab in relapsed or refractory mantle cell lymphoma: a single-centre, open-label, phase 2 trial. *Lancet Oncol* 2016; 17: 48–56.
 38. Zinzani PL, Vose JM, Czuczman MS et al. Long-term follow-up of lenalidomide in relapsed/refractory mantle cell lymphoma: subset analysis of the NHL-003 study. *Ann Oncol* 2013; 24: 2892–2897.
 39. Goy A, Sinha R, Williams ME et al. Single-agent lenalidomide in patients with mantle-cell lymphoma who relapsed or progressed after or were refractory to bortezomib: phase II MCL-001 (EMERGE) study. *J Clin Oncol* 2013; 31: 3688–3695.
 40. Trněný M, Lamy T, Walewski J et al. Lenalidomide versus investigator's choice in relapsed or refractory mantle cell lymphoma (MCL-002; SPRINT): a phase 2, randomised, multicentre trial. *Lancet Oncol* 2016; 17: 319–331.
 41. Wang M, Fayad L, Wagner-Bartak N et al. Lenalidomide in combination with rituximab for patients with relapsed or refractory mantle-cell lymphoma: a phase 1/2 clinical trial. *Lancet Oncol* 2012; 13: 716–723.
 42. Hess G, Herbrecht R, Romaguera J et al. Phase III study to evaluate temsirolimus compared with investigator's choice therapy for the treatment of relapsed or refractory mantle cell lymphoma. *J Clin Oncol* 2009; 27: 3822–3829.
 43. Ansell SM, Tang H, Kurtin PJ et al. Temsirolimus and rituximab in patients with relapsed or refractory mantle cell lymphoma: a phase 2 study. *Lancet Oncol* 2011; 12: 361–368.
 44. Hess G, Karola W, LaRosee P et al. Temsirolimus in combination with bendamustine and rituximab (BeRT) for the treatment of relapsed mantle cell and follicular lymphoma: final phase I/II results. *Blood* 2016; (ASH Annual Meeting Abstracts) 128: 2977.
 45. Goy A, Bernstein SH, Kahl BS et al. Bortezomib in patients with relapsed or refractory mantle cell lymphoma: updated time-to-event analyses of the multicenter phase 2 PINNACLE study. *Ann Oncol* 2009; 20: 520–525.
 46. Forstpointner R, Unterhalt M, Dreyling M et al. Maintenance therapy with rituximab leads to a significant prolongation of response duration after salvage therapy with a combination of rituximab, fludarabine, cyclophosphamide, and mitoxantrone (R-FCM) in patients with recurring and refractory follicular and mantle cell lymphomas: results of a prospective randomized study of the German Low Grade Lymphoma Study Group (GLSG). *Blood* 2006; 108: 4003–4008.
 47. Wang M, Oki Y, Pro B et al. Phase II study of yttrium-90-ibritumomab tiuxetan in patients with relapsed or refractory mantle cell lymphoma. *J Clin Oncol* 2009; 27: 5213–5218.
 48. Ferrero S, Pastore A, Scholz CW et al. Radioimmunotherapy in relapsed/refractory mantle cell lymphoma patients: final results of a European MCL network phase II trial. *Leukemia* 2016; 30: 984–987.
 49. Cassaday RD, Guthrie KA, Budde EL et al. Specific features identify patients with relapsed or refractory mantle cell lymphoma benefitting from autologous hematopoietic cell transplantation. *Biol Blood Marrow Transplant* 2013; 19: 1403–1406.
 50. Robinson S, Dreger P, Caballero D et al. The EBMT/EMCL consensus project on the role of autologous and allogeneic stem cell transplantation in mantle cell lymphoma. *Leukemia* 2015; 29: 464–473.
 51. Pott C, Hoster E, Delfau-Larue MH et al. Molecular remission is an independent predictor of clinical outcome in patients with mantle cell lymphoma after combined immunochemotherapy: a European MCL intergroup study. *Blood* 2010; 115: 3215–3223.
 52. Ladetto M, Magni M, Pagliano G et al. Rituximab induces effective clearance of minimal residual disease in molecular relapses of mantle cell lymphoma. *Biol Blood Marrow Transplant* 2006; 12: 1270–1276.
 53. Davids MS, Roberts AW, Seymour JF et al. Phase I first-in-human study of venetoclax in patients with relapsed or refractory non-Hodgkin lymphoma. *J Clin Oncol* 2017; 35: 826–833.
 54. Herold M, Haas A et al. Immunochemotherapy (R-MCP) in advanced mantle cell lymphoma is not superior to chemotherapy (MCP) alone - 50 months update of the OSHO phase III study (OSHO#39). *Ann Oncol* 2008; 19 (Suppl. 4): iv85–iv86.
 55. Eskelund CW, Kolstad A, Jerkeman M et al. 15-year follow-up of the Second Nordic Mantle Cell Lymphoma trial (MCL2): prolonged remissions without survival plateau. *Br J Haematol* 2016; 175: 410–418.
 56. Delarue R, Haioun C, Ribrag V et al. CHOP and DHAP plus rituximab followed by autologous stem cell transplantation in mantle cell lymphoma: a phase 2 study from the Groupe d'Etude des Lymphomes de l'Adulte. *Blood* 2013; 121: 48–53.
 57. Kahl BS, Spurgeon SE, Furman RR et al. A phase 1 study of the PI3K δ inhibitor idelalisib in patients with relapsed/refractory mantle cell lymphoma (MCL). *Blood* 2014; 123: 3398–3405.
 58. Dykewicz CA. Summary of the guidelines for preventing opportunistic infections among hematopoietic stem cell transplant recipients. *Clin Infect Dis* 2001; 33: 139–144.